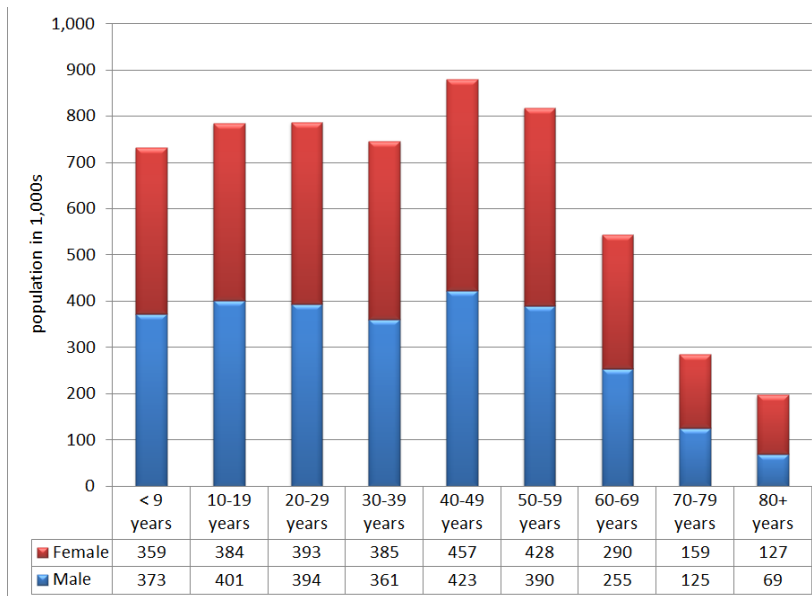


POLICY ACADEMY STATE PROFILE

# Maryland Population

MARYLAND POPULATION (IN 1,000S) BY—AGE GROUP



Source: U.S. Census Bureau, 2010

Maryland is home to almost 5.8 million people. Of these, more than 1.8 million (31.9 percent) are over age 50; more than 1 million (17.8 percent) are over 60; over 481,000 (8.3 percent) are over 70; and nearly 197,000 (3.4 percent) are over 80. The proportion of women rises to 64.7 percent of those 80 and older. The racial/ethnic composition of Marylanders is as follows:

Race/Ethnicity of Marylanders

Age	White	Black	Asian	Other	White Not Hispanic
<55	56.3	31.0	5.7	7.0	61.5
55+	70.5	23.3	4.3	1.9	68.8

Source: U.S. Census Bureau Projections, 2009

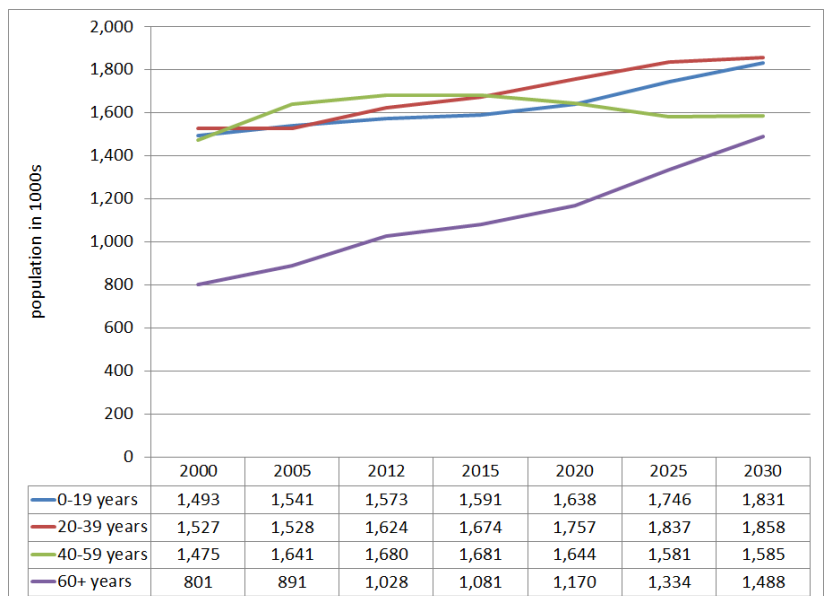
## THE NUMBER OF OLDER MARYLANDERS IS GROWING (POPULATION IN 1,000S)

The proportion of Maryland’s population that is 60 and older is growing more rapidly than other components of the population. The U.S. Census Bureau estimates that 22 percent of Maryland’s population will be 60 and older by the year 2030, an increase of 26 percent from 2012.

Projected Maryland Population

	2012	2020	2030
0-19 years	26.6%	18.8%	27.1%
20-39 year	27.5%	28.3%	27.5%
40-59 year	28.4%	26.5%	23.4%
60+ years	17.4%	18.8%	22.0%

Source: U.S. Census Bureau Projections, 2009



Source: U.S. Census Bureau Projections, 2009

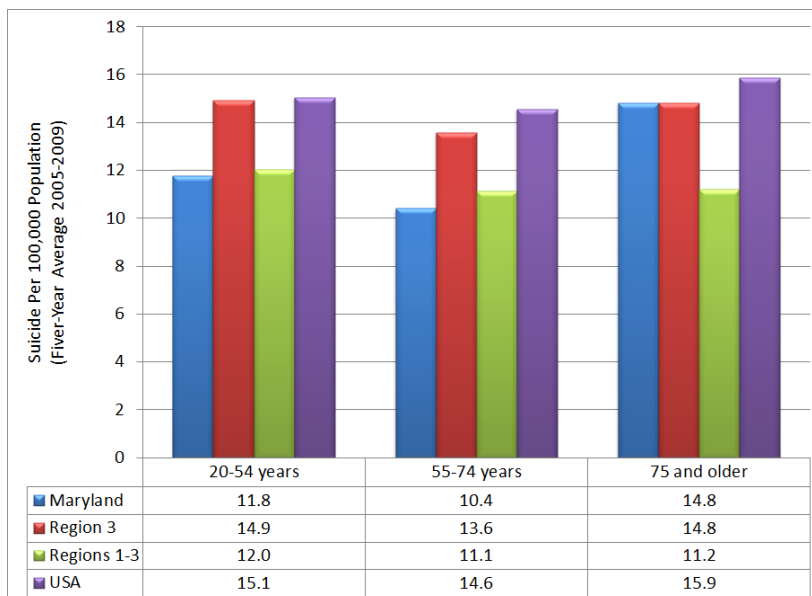
# Suicide Among Older Marylanders

## 2005–2009 NATIONAL AND REGIONAL SUICIDE RATES PER 100,000 POPULATION

The five-year average suicide rate among Marylanders ages 55–74 is slightly lower than the rate in the 20–54 age group, whereas the rate among Marylanders 75 and older is higher than the rate in the 20–54 age group. Maryland’s rates for age groups 20–54 and 55–74 are lower than national rates and comparable to those in Regions 1–3, which include Connecticut, Delaware, Maine, Maryland, Massachusetts, New Hampshire, New Jersey, New York, Pennsylvania, Puerto Rico, Rhode Island, the U.S. Virgin Islands, Vermont, Virginia, and West Virginia. Region 3 includes Delaware, Maryland, Pennsylvania, Virginia, and West Virginia.

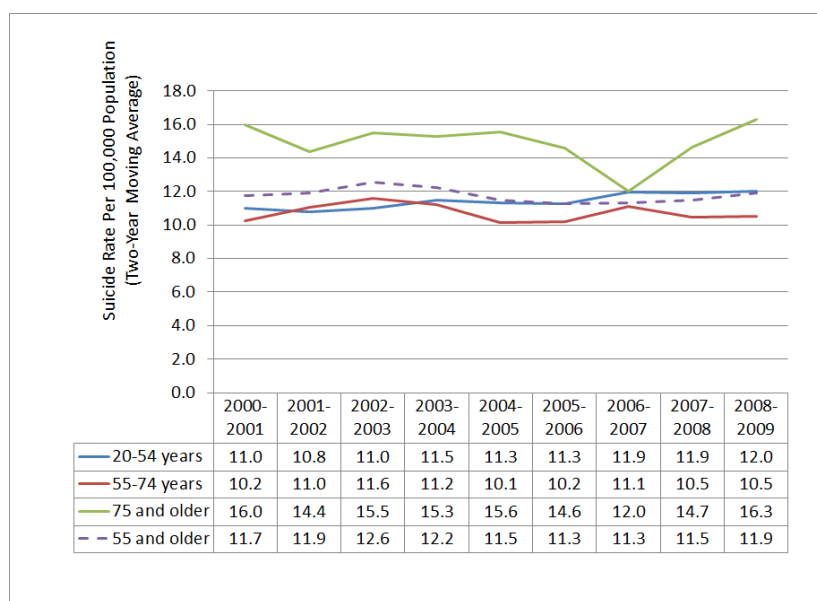
Please note: States may vary in their reporting practices regarding suicide deaths. The apparent rate of suicide is influenced by these reporting practices.

The District of Columbia is not included in regional data.



Source: Centers for Disease Control and Prevention (CDC) Vital Statistics, 2009

## MARYLAND SUICIDE TREND



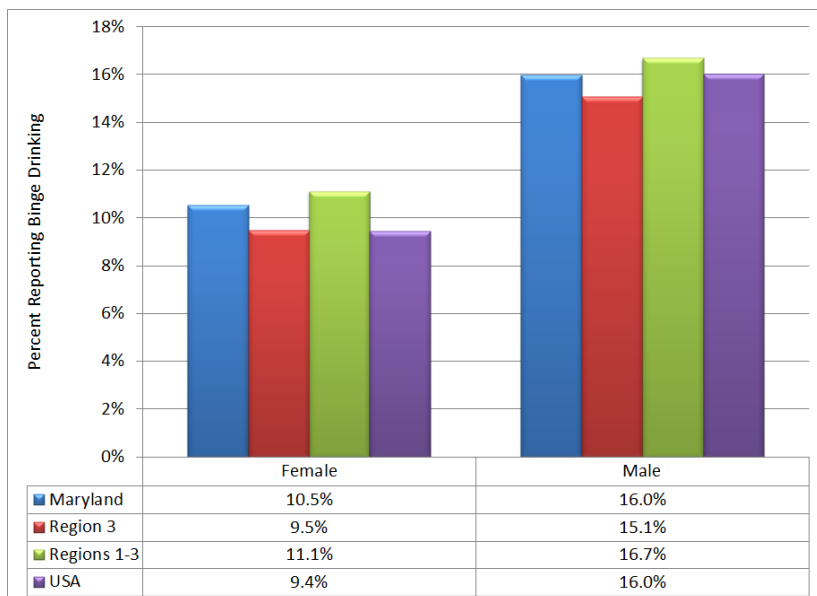
The two-year moving average rate of suicide among Marylanders ages 55 and older—shown with the dashed line—has varied from a low of 11.3 per 100,000 in 2005–2006 and 2006–2007 to a high of 12.6 in 2002–2003.

Please note: States may vary in their suicide reporting practices and may vary from year to year within the same state. The number of suicides is generally low, so even a small difference in reported numbers may make the rate appear to fluctuate widely.

Source: CDC Vital Statistics, 2009

# Older Marylanders' Substance Use/Abuse

## 30-DAY BINGE DRINKING AMONG OLDER MARYLANDERS—GENDER



Duke Medicine News (August 17, 2009) notes that binge drinking can cause “serious problems, such as stroke, cardiovascular disease, liver disease, neurological damage and poor diabetes control.” Binge drinkers are more likely to take risks such as driving while intoxicated and to experience falls and other accidents. Older people have less tolerance for alcohol. Therefore, the figure at left defines a “binge” as three or more drinks in one event for women and four or more for men. Binge drinking is higher among men in all states. In Maryland, 16 percent of men ages 50 and older engage in binge drinking whereas 10.5 percent of women ages 50 and older reported binge drinking. The overall rate of binge drinking among this age group is 12.5 percent.

Source: Behavioral Risk Factor Surveillance System (BRFSS), 2011

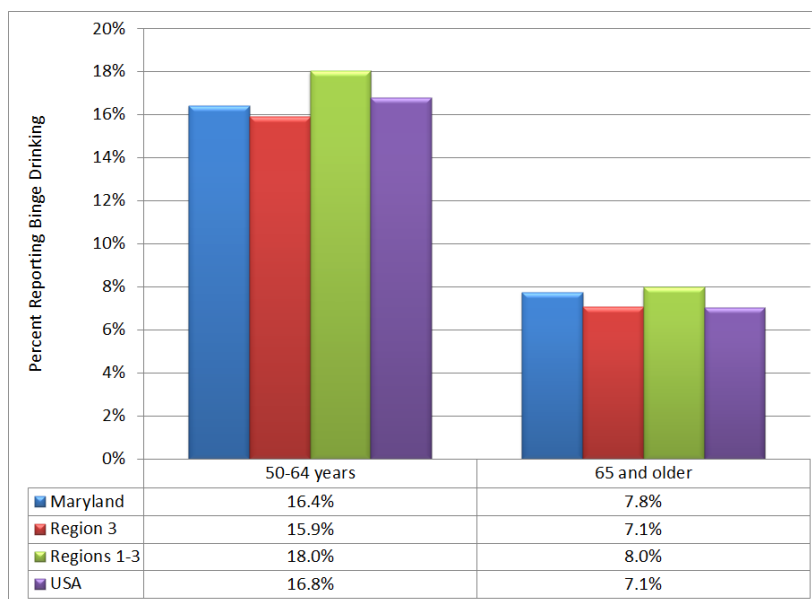
Confidence intervals for national and state estimates are less than  $\pm 0.2$  and  $\pm 1.0$  percent, respectively.

## 30-DAY BINGE DRINKING AMONG OLDER MARYLANDERS—AGE GROUP

Binge drinking tends to decrease with age: 16.4 percent of Marylanders ages 50–64 reported binge drinking, whereas 7.8 percent in the 65 and older group reported similar behavior. Confidence intervals for national and state estimates are less than  $\pm 0.2$  and  $\pm 1.0$  percent, respectively. The table below provides a breakdown by age group and gender.

### Percentage of Marylanders Reporting Binge Drinking by Age and Gender

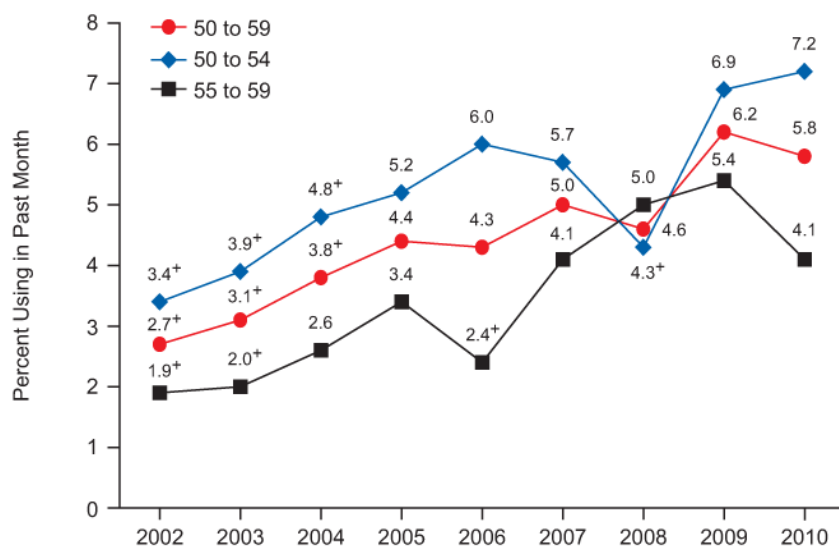
	50-64 years	65 and older
Female	14.0%	6.4%
Male	20.3%	10.3%



Source: BRFSS, 2011

## ILLICIT DRUG USE AMONG OLDER AMERICANS

Nationally, illicit drug use has more than doubled among 50–59-year-olds since 2002. The rate rose from 3.4 to 7.2 percent among 50–54-year-olds and from 1.9 to 4.1 percent among 55–59-year-olds. According to the Substance Abuse and Mental Health Services Administration (SAMHSA), “These patterns and trends partially reflect the aging into these age groups of members of the baby boom cohort, whose rates of illicit drug use have been higher than those of older cohorts.” Specific data about substance abuse among older Marylanders are not available; however, the SAMHSA National Survey on Drug Use and Health (NSDUH) (<http://www.oas.samhsa.gov/2k9state/Cover.pdf>) provides general information about substance use in Maryland.



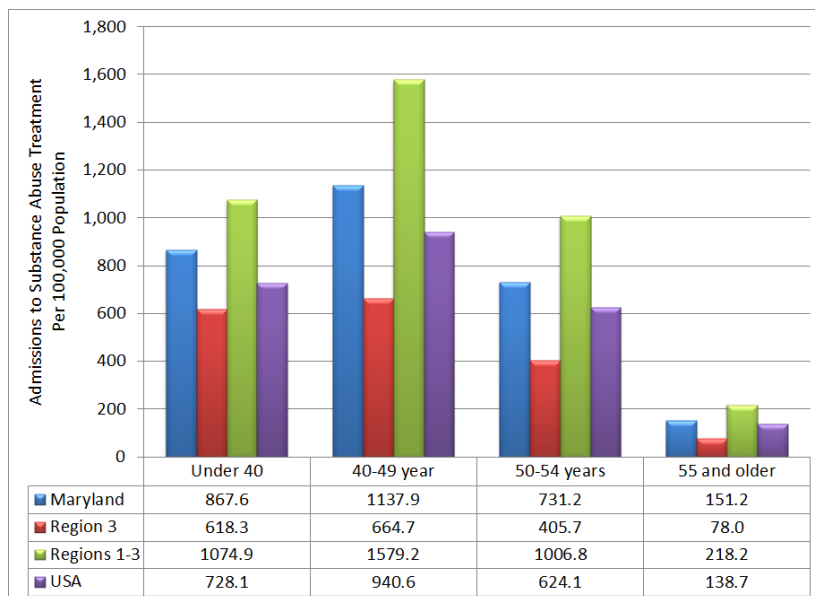
Source: NSDUH, 2010  
Volume 1, Summary of National Findings

## DRUG-RELATED EMERGENCY DEPARTMENT VISITS INVOLVING PHARMACEUTICAL MISUSE AND ABUSE BY OLDER ADULTS

SAMHSA’s Center for Behavioral Health Statistics and Quality periodically releases reports from the Drug Abuse Warning Network (DAWN). DAWN comprises a nationwide network of hospital emergency rooms (ERs) primarily located in large metropolitan areas. DAWN data consist of professional reviews of ER records to determine the likelihood and extent to which alcohol and drug abuse was involved. According to the November 25, 2010, *DAWN Report*:

- *In 2004, there were an estimated 115,803 emergency department (ED) visits involving pharmaceutical misuse and abuse by adults aged 50 or older; in 2008, there were 256,097 such visits, representing an increase of 121.1 percent*
- *One fifth (19.7 percent) of ED visits involving pharmaceutical misuse and abuse among older adults were made by persons aged 70 or older*
- *Among ED visits made by older adults, pain relievers were the type of pharmaceutical most commonly involved (43.5 percent), followed by drugs used to treat anxiety or insomnia (31.8 percent) and antidepressants (8.6 percent)*
- *Among patients aged 50 or older who visited the ED for pharmaceutical misuse or abuse, more than half (52.3 percent) were treated and released, and more than one third (37.5 percent) were admitted to the hospital* (italic text is taken directly from the report, available at <http://www.samhsa.gov/data/2k10/WebSR018Pharma50+/Pharma50+HTML.pdf>).

ADMISSIONS TO SUBSTANCE ABUSE TREATMENT AMONG MARYLANDERS AGES 50 AND OLDER



In 2010, Maryland reported about 5,300 admissions to substance abuse treatment among those ages 50 and older. This represented a rate of 289.8 admissions per 100,000 population. However, state reporting practices have a strong impact on the apparent rate:

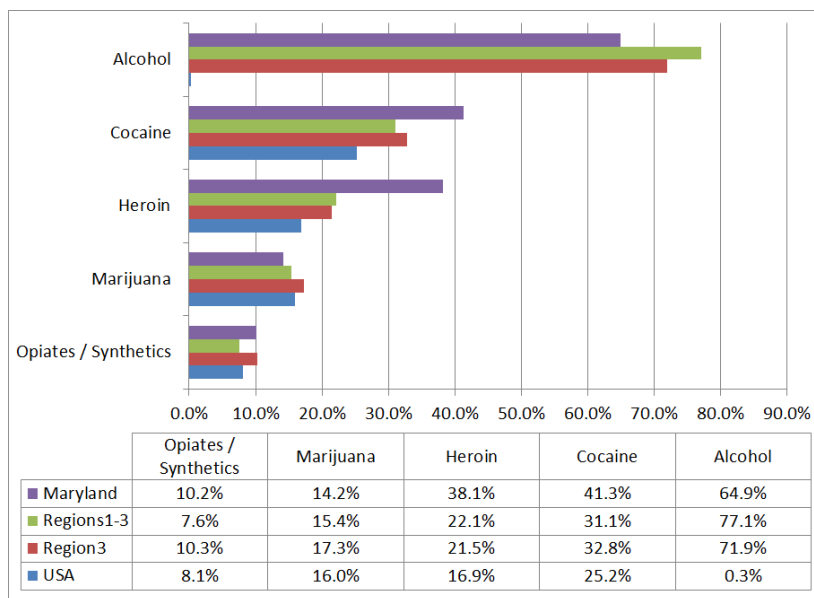
- 73.1 percent of admissions were men.
- 42.3 percent of admissions were White.
- 55.4 percent of admissions were Black/African American.
- 2.3 percent of admissions were of Hispanic descent.
- 29.5 percent of admissions were referred to treatment through the criminal justice system.

Source: Treatment Episode Data Set (TEDS), 2010<sup>1</sup>  
Data include only those admissions reported to TEDS

TREATMENT ADMISSIONS AGES 50 AND OLDER—SUBSTANCES USED

Alcohol was by far the most frequently used substance among older Marylanders in publicly financed substance abuse treatment in 2010. Alcohol was mentioned as the primary, secondary, or tertiary substance of abuse in nearly 65 percent of admissions among those ages 50 and older. Alcohol was followed by cocaine at 41.3 percent, heroin at 38.1 percent, marijuana at 14.2 percent, and opiates/synthetics at 10.2 percent.

Please note: TEDS data include only those clients reported to SAMHSA.

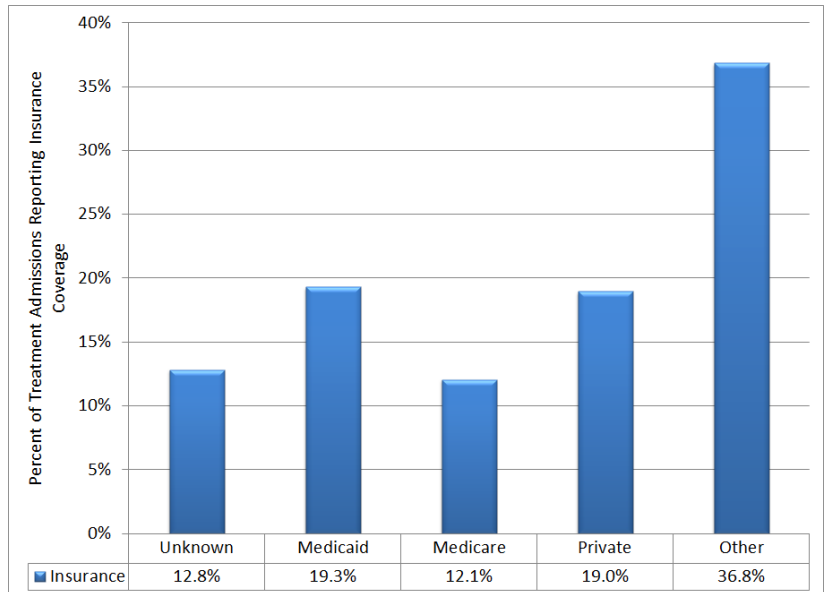


Source: TEDS, 2010

<sup>1</sup> TEDS data are collected by states that accept Substance Abuse Prevention and Treatment (SAPT) Block Grant funds. Guidelines suggest that states report all clients admitted to publicly financed treatment; however, states are inconsistent in applying the guidelines. States also have freedom to structure and implement different quality controls over the data. For example, states may collect different categories of information to answer TEDS questions. Information is then “walked over” to TEDS definitions.

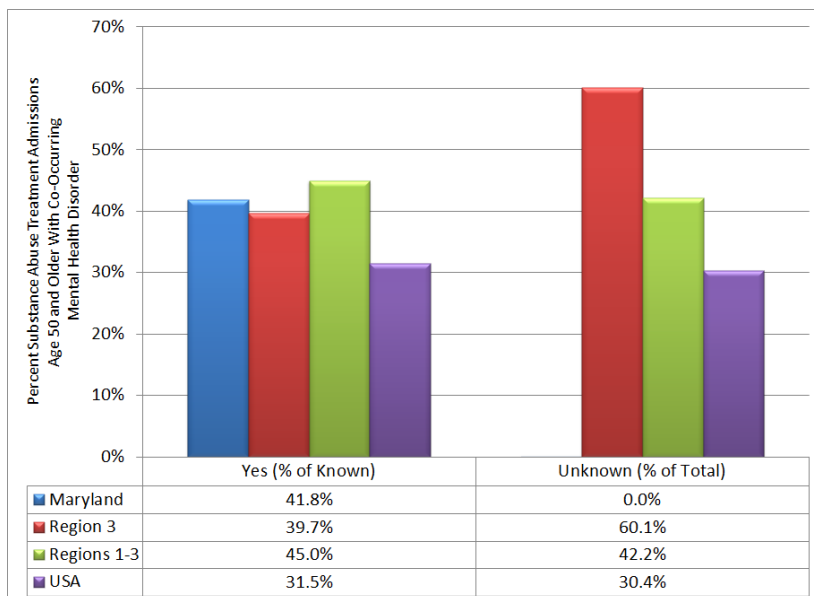
### TREATMENT ADMISSIONS AMONG AGES 50 AND OLDER—INSURANCE TYPE

Nearly 20 percent of individuals ages 50 and older who were admitted to substance abuse treatment reported that they was covered by the state’s Medicaid program. In 19 percent of admissions, clients reported that they were covered by private insurance. In nearly 13 percent of admissions, the source of insurance coverage was unknown.



Source: TEDS, 2010

### TREATMENT ADMISSIONS AGES 50 AND OLDER WITH CO-OCCURRING MENTAL HEALTH DISORDERS



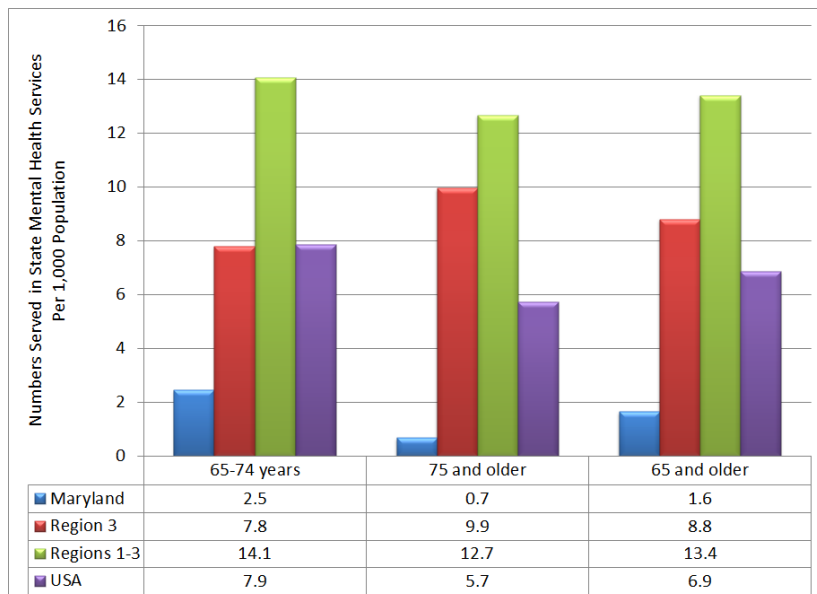
Source: TEDS, 2010

Research shows a strong relationship between substance use and mental health disorders. Studies show 30–80 percent of people with a substance use or mental health disorder also have a co-occurring substance abuse/mental health disorder. The figure at left shows that more than 40 percent of Marylanders ages 50 and older who were admitted to substance abuse treatment also had a mental health diagnosis. However, reporting practices influence these results. Although Maryland reported this field, not all of the states within the Region reported the existence of co-occurring disorders.

Please note: Data include only those admissions reported to TEDS.

# Mental Health

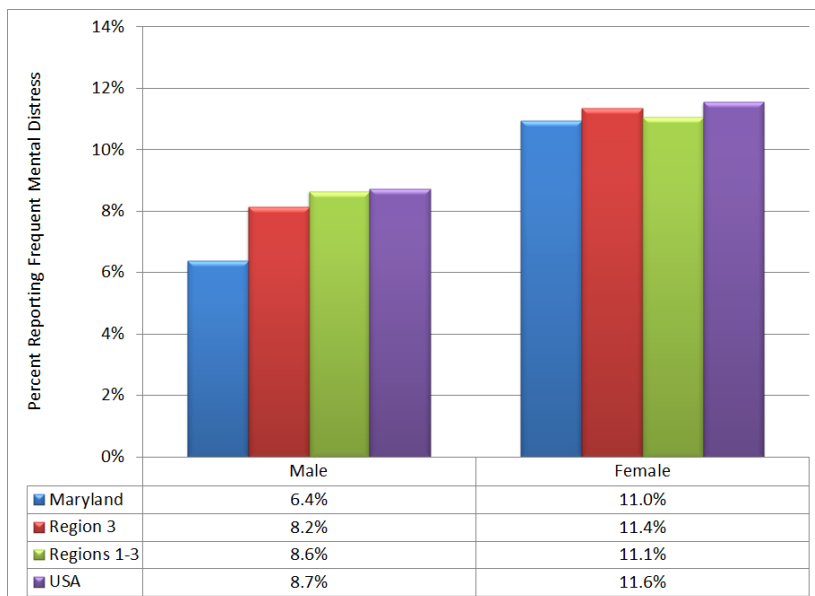
## MARYLANDERS AGES 65 AND OLDER ADMITTED TO STATE MENTAL HEALTH SERVICES



Less than 1 percent of people served by the Maryland mental health system were ages 65 and older (0.74 percent were ages 65 to 74 and 0.17 percent were ages 75 and older). This represents a total of approximately 1,200 people. The figure at left shows penetration rates per 1,000 population whereas the data cited above refer to the percentage of individuals within the service system. These and other data about Maryland’s mental health system are available at <http://www.samhsa.gov/dataoutcomes/urs/2011/Maryland.pdf>.

Source: Center for Mental Health Services (CMHS) Uniform Reporting System (URS), 2011

## OLDER MARYLANDERS REPORTING FREQUENT MENTAL DISTRESS—GENDER



BRFSS, a household survey conducted in all states and several territories, asks the following question: “Now thinking about your mental health, which includes stress, depression, and problems with emotions, for how many days during the past 30 days was your mental health not good?” The CDC defines those individuals reporting 14 or more “Yes” days in response to this question as experiencing frequent mental distress (FMD). Older women in the nation and the Region are more likely to report FMD. Overall, 9.1 percent of Marylanders ages 50 and older reported FMD: 11 percent of women and 6.4 percent of men. Confidence intervals for national and Maryland estimates are less than  $\pm 0.2$  and  $\pm 1.0$  percent, respectively.

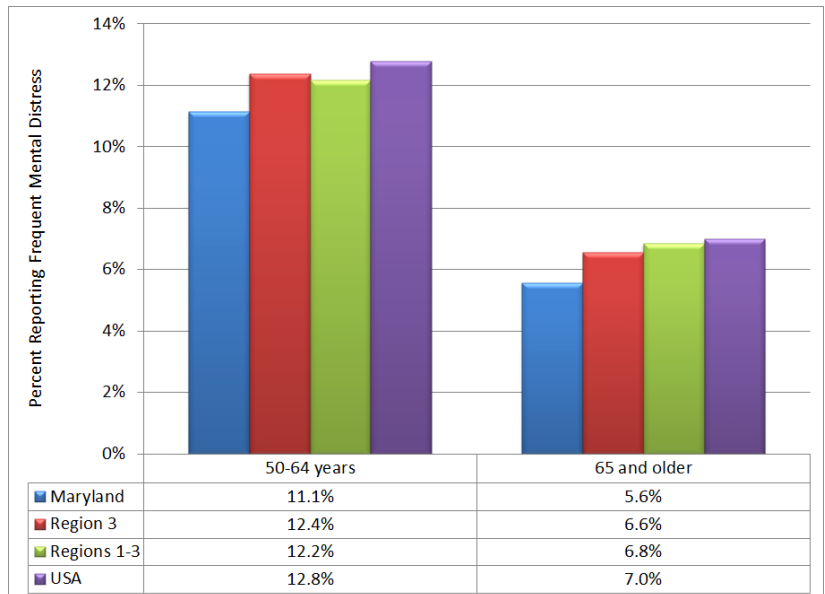
Source: BRFSS, 2011

OLDER MARYLANDERS REPORTING FREQUENT MENTAL DISTRESS—AGE GROUP

Marylanders in the 50–64 age group—as in the nation and the Western Region—were more likely than those in the 65 and older group to report FMD: 11.1 percent in the 50–64 and 5.6 percent in the 65 and older group reported FMD. Confidence intervals for national and Maryland estimates are less than  $\pm 0.2$  and  $\pm 1.0$  percent, respectively. The below table provides a breakdown by age group and gender.

Percentage of Marylanders Reporting FMD by Age Group and Gender

	Male	Female
50-64 years	7.9%	13.4%
65 and older	3.8%	6.8%



Source: BRFSS, 2011



OTHER MEASURES OF MENTAL HEALTH

BRFSS collected other measures showing risk factors for mental and/or physical illness. These included:

- Social and Emotional Support (2010). BRFSS asked, “How often do you get the social and emotional support you need?” Responses included always, usually, sometimes, rarely, or never.
- Life Satisfaction (2010). BRFSS asked, “In general, how satisfied are you with your life?” Responses included very satisfied, satisfied, dissatisfied, or very dissatisfied.
- Current Depression (2006). In 2006, BRFSS included a special anxiety and depression module that was collected in 38 states and several jurisdictions, including Maryland.
- Lifetime Diagnosis of Depression (2006). BRFSS asked, “Has a doctor or other healthcare provider EVER told you that you have a depressive disorder (including depression, major depression, dysthymia, or minor depression)?”
- Lifetime Diagnosis of Anxiety Disorder (2006). BRFSS asked, “Has a doctor or other healthcare provider EVER told you that you have an anxiety disorder (including acute stress disorder, anxiety, generalized anxiety disorder, obsessive-compulsive disorder, panic attacks, panic disorder, posttraumatic stress disorder, or social anxiety disorder)?”

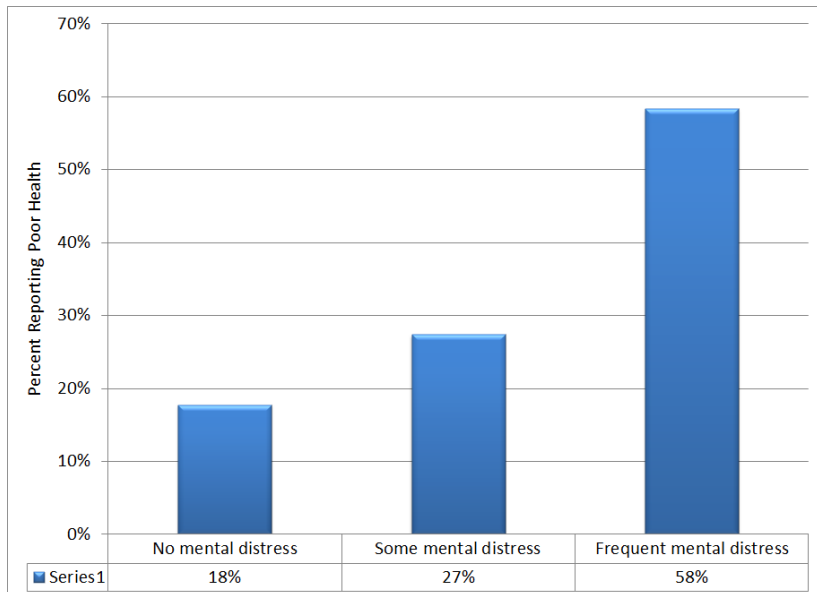
The results of these surveys among older Marylanders are shown below

BRFSS MEASURES, 2010

Indicator	Age Group					
	Ages 50+		Ages 50–64		Ages 65+	
	Data %	Confidence Interval	Data %	Confidence Interval	Data %	Confidence Interval
Core BRFSS Indicators (2010)						
Rarely or never get social or emotional support (revised)	8.0	(7.6–8.4)	7.0	(6.5–7.5)	9.6	(8.9–10.3)
Very dissatisfied or dissatisfied with life (revised)	5.0	(4.7–5.3)	5.2	(4.8–5.6)	4.8	(4.3–5.3)
Anxiety and Depression Optional Module Indicators (2006) <sup>2</sup>						
Current Depression	8.8	(7.4–10.5)	10.9	(8.9–13.4)	5.4	(3.8–7.4)
Lifetime Diagnosis of Depression	14.2	(12.7–15.9)	17.0	(14.8–19.4)	9.8	(7.8–12.3)
Lifetime Diagnosis of Anxiety Disorder	10.1	(8.8–11.7)	11.7	(9.8–14.0)	7.6	(6.0–9.7)

<sup>2</sup> Data available at <http://apps.nccd.cdc.gov/MAHA/StateDetails.aspx?State=MD> .

### PEOPLE WITH FREQUENT MENTAL DISTRESS REPORT POOR PHYSICAL HEALTH



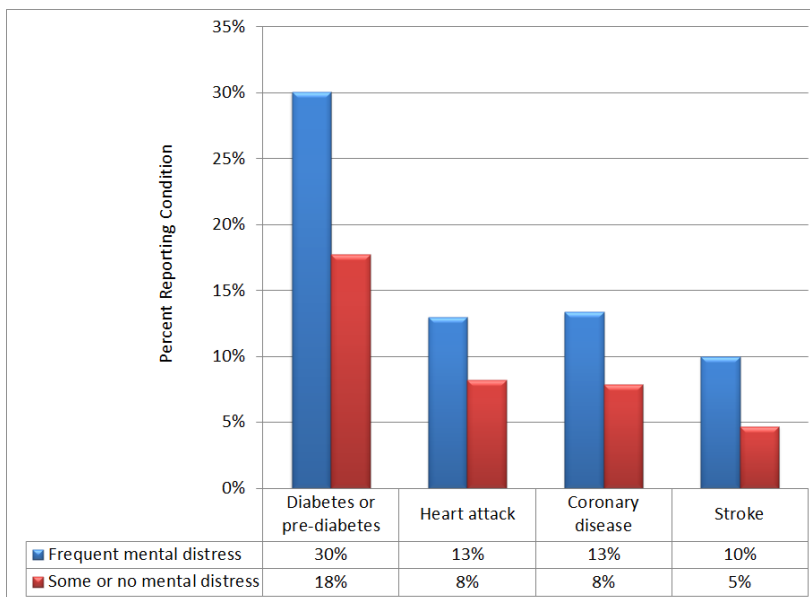
Older Americans who experienced FMD were more likely to report that their physical health was poor or fair (as opposed to good, very good, or excellent). As shown in the figure at left, although 18 percent of older Americans with no mental distress reported poor or fair physical health, nearly 60 percent—nearly triple the rate—of those with FMD reported poor/fair health. Older Americans with FMD were also much more likely to report that they had experienced serious health problems. These differences are statistically significant.

Source: BRFSS, 2011

### RELATIONSHIP BETWEEN MENTAL DISTRESS AND SERIOUS HEALTH PROBLEMS

Older Americans who experience FMD, such as symptoms of depression or anxiety, are more likely to report that they had chronic health problems. People with FMD experienced strokes at twice the rate of those with some or no mental distress (10 percent versus 5 percent). They experienced coronary disease, heart attack, and diabetes/pre-diabetes at more than 1.5 times the rate of those with some or no mental distress (13 versus 8 percent for coronary disease and heart attack and 30 versus 18 percent for diabetes/pre-diabetes).

These differences are statistically significant.



Source: BRFSS, 2011

## DATA SOURCES

BEHAVIORAL RISK FACTOR SURVEILLANCE SYSTEM (<http://www.cdc.gov/brfss/>), CDC. Atlanta, Georgia: U.S. Department of Health and Human Services, 2010 and 2011. BRFSS is “the world’s largest, on-going telephone health survey system, tracking health conditions and risk behaviors in the United States yearly since 1984. Currently, data are collected monthly in all 50 states, the District of Columbia, Puerto Rico, the U.S. Virgin Islands, and Guam.” BRFSS data are collected by local jurisdictions and reported to the CDC.

NATIONAL SURVEY ON DRUG USE AND HEALTH (<https://nsduhweb.rti.org/>), Center for Behavioral Health Statistics and Quality. Rockville, Maryland: U.S. Department of Health and Human Services, SAMHSA, ICPSR32722-v1; Ann Arbor, Michigan: Inter-university Consortium for Political and Social Research [distributor], 2011-12-05. doi:10.3886/ICPSR32722.v1. NSDUH, managed by SAMHSA, is “an annual nationwide survey involving interviews with approximately 70,000 randomly selected individuals aged 12 and older.” NSDUH data are most frequently used by state planners to assess the need for substance abuse treatment. NSDUH data also include information about mental health needs.

NATIONAL VITAL STATISTICS (<http://www.cdc.gov/nchs/nvss.htm>), CDC. Atlanta, Georgia: U.S. Department of Health and Human Services, 2009. The CDC Web site describes the National Vital Statistics System as “the oldest and most successful example of inter-governmental data sharing in Public Health and the shared relationships, standards, and procedures form the mechanism by which NCHS [National Center for Health Statistics] collects and disseminates the Nation’s official vital statistics. These data are provided through contracts between NCHS and vital registration systems operated in the various jurisdictions legally responsible for the registration of vital events—births, deaths, marriages, divorces, and fetal deaths.”

TREATMENT EPISODE DATA SET (<http://www.icpsr.umich.edu/icpsrweb/SAMHDA/>), Center for Behavioral Health Statistics and Quality. Rockville, Maryland: U.S. Department of Health and Human Services, SAMHSA. Treatment Episode Data Set—Admissions (TEDS-A), 2010. ICPSR30462-v2; Ann Arbor, Michigan: Inter-university Consortium for Political and Social Research [distributor], 2012-07-18. doi:10.3886/ICPSR30462.v2. States that participate in the SAPT Block Grant submit individual client data to TEDS. TEDS includes both admission and discharge data sets, and some 1.5 million admissions are reported annually. TEDS includes information about utilization of substance abuse treatment services as well as client demographic and outcome information.

UNIFORM REPORTING SYSTEM (<http://www.samhsa.gov/dataoutcomes/urs/>), CMHS. Rockville, Maryland: U.S. Department of Health and Human Services, SAMHSA, 2011. States that receive CMHS Block Grants are required to report aggregate data to URS. URS reports information about utilization of mental health services as well as client demographic and outcome information.

U.S. CENSUS BUREAU (<http://www.census.gov/people/>). Two main sources of Census Bureau data were used in this report: (1) population estimates and (2) population projections. Population projections and estimates were created using 2010 Census data.

**This profile was developed by the Substance Abuse and Mental Health Services Administration in partnership with the U.S. Administration on Aging.**